



MINISTRY OF DEFENCE



# **ADMINISTRATIVE AND OPERACIONAL CENTRE OF THE AMAZON PROTECTION SYSTEM - CENSIPAM**



**FERNANDO CAMPAGNOLI, DSc**

**Products Director**

**LATIN AMERICA GEOSPATIAL FORUM - RIO, August 16 th, 2012**





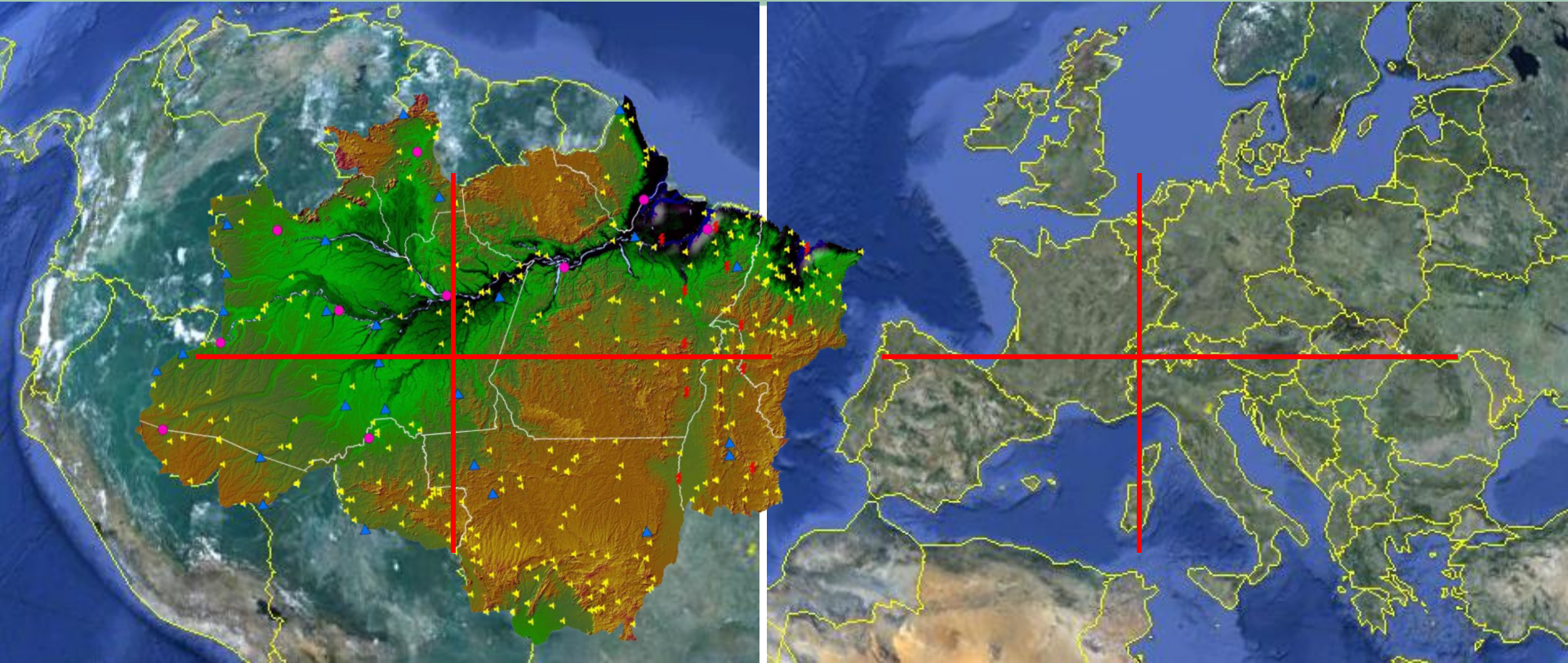
# What is the Amazon?







# few numbers on Amazon



Population of 20 million people

Largest rainforest in the world

5.2 million square kilometers

Amazon River: average flow of 200,000 cubic meters per second



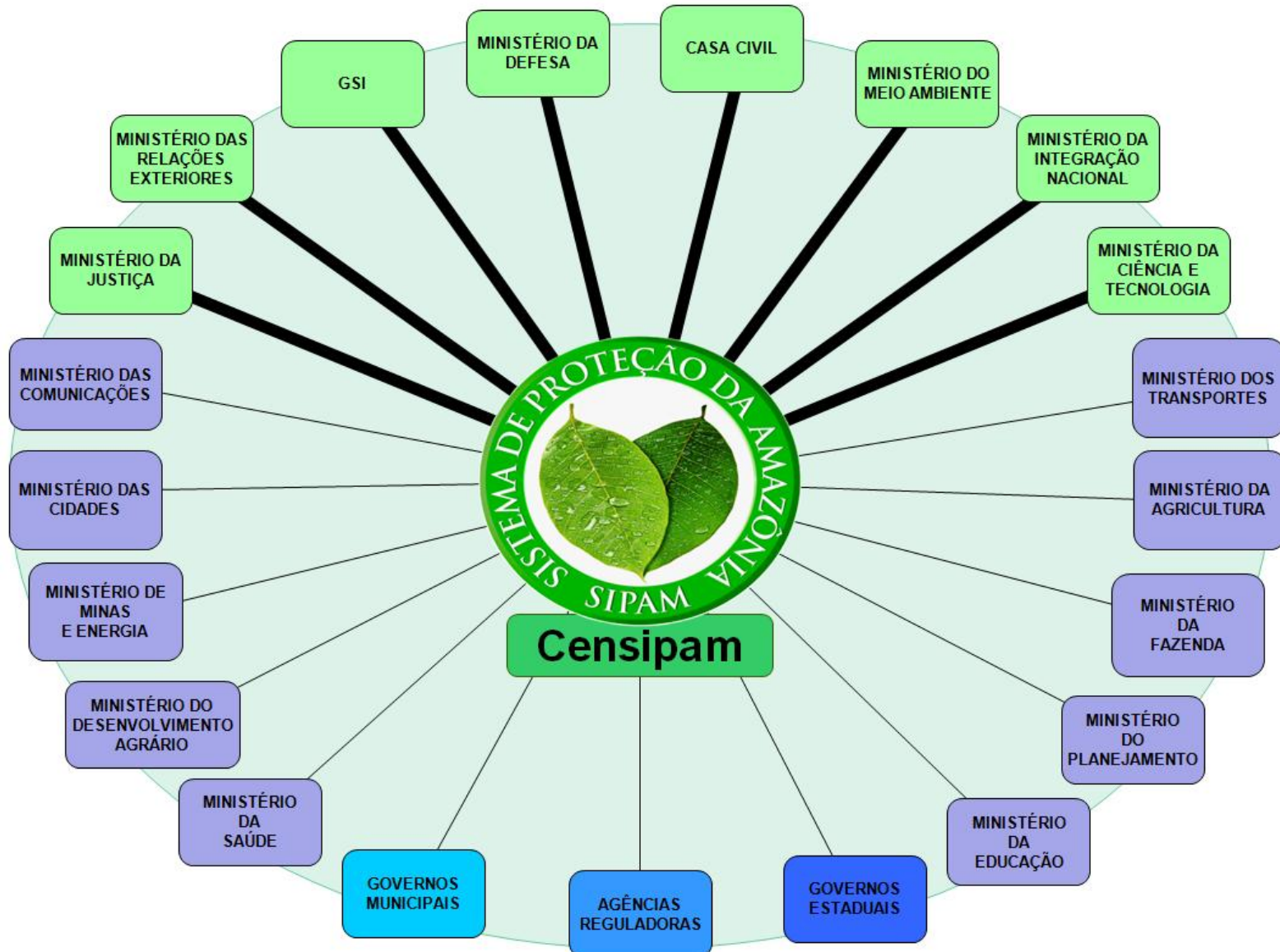


# What is the CENSIPAM?





# institutional networking





# MISSION AND VISION

## **Mission**

Protect the Amazon Region with integration of the government public policies to territorial planning and regional sustainable development .

## **Vision to next 12 years**

Being national and international reference on generation and application of knowledge to political policies in the Amazon.





How to use the Geotechnologies for regional implementation of public policies in the Amazon?



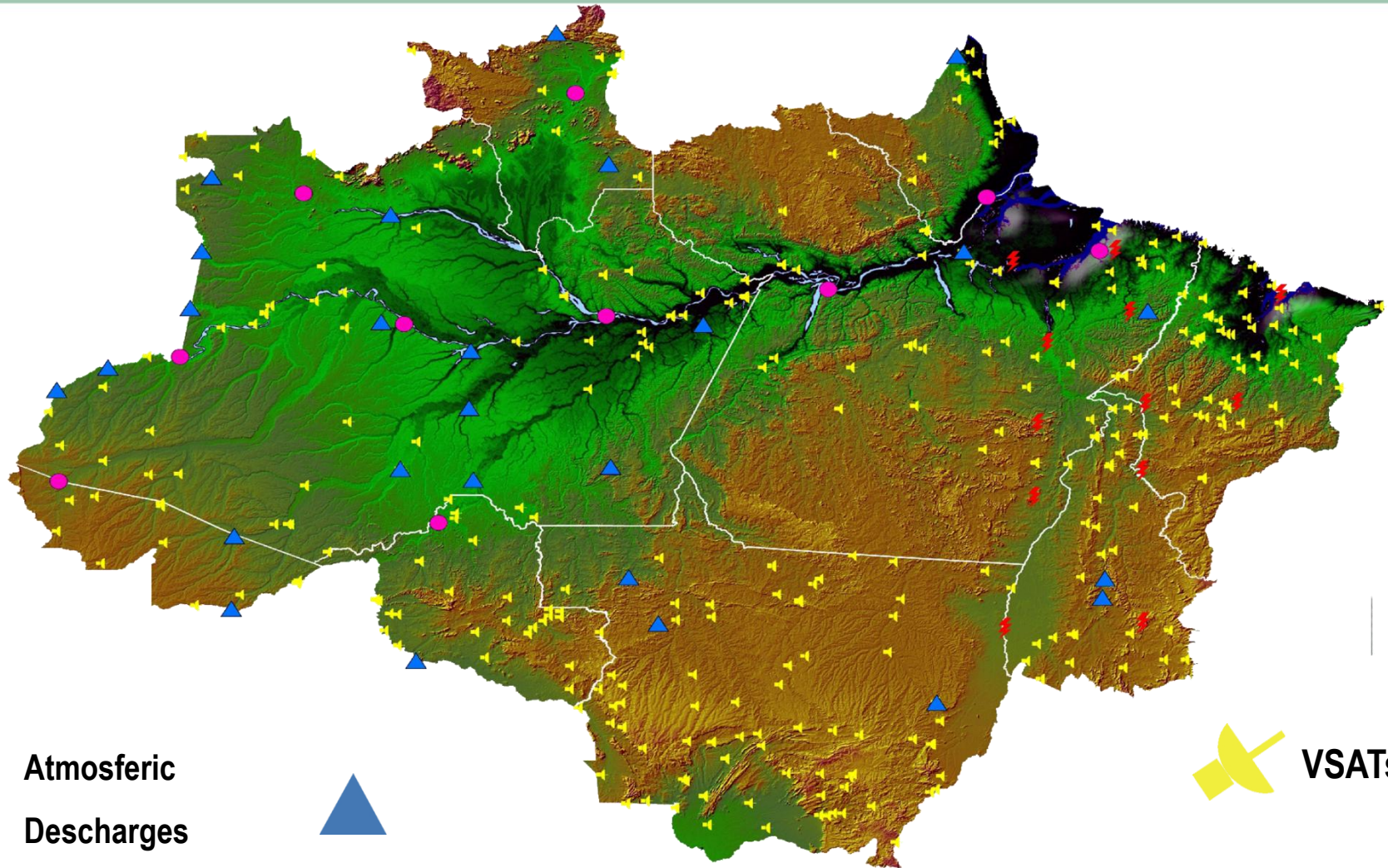
## Regional Centres: Belém, Manaus, Porto Velho and Brasília (coordenation focal point)







# TECHNOLOGICAL STRUCTURE



Atmosferic  
Descharges



Meteorological  
stations



Meteorological Radars



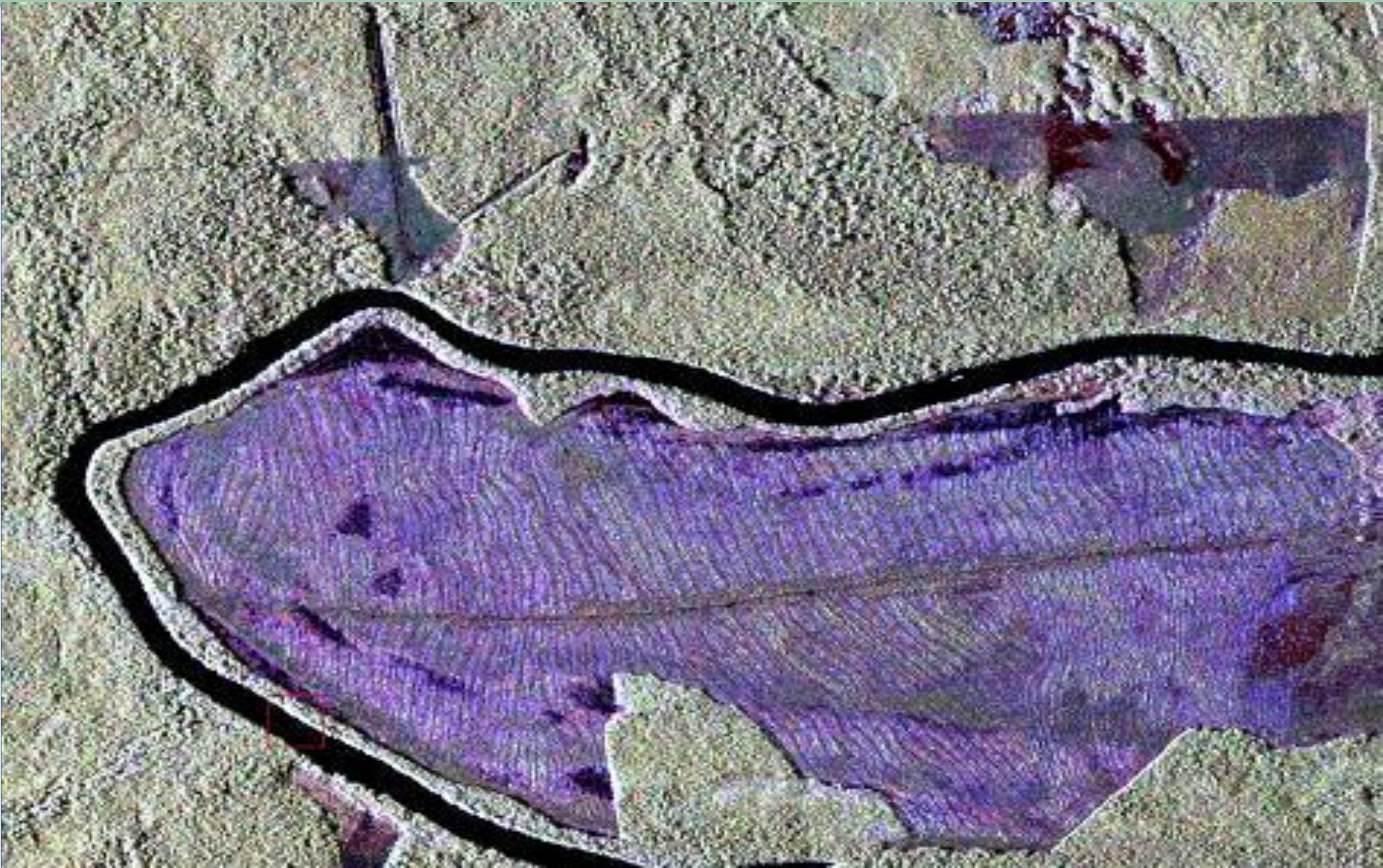
VSATs

Detections  
Stations





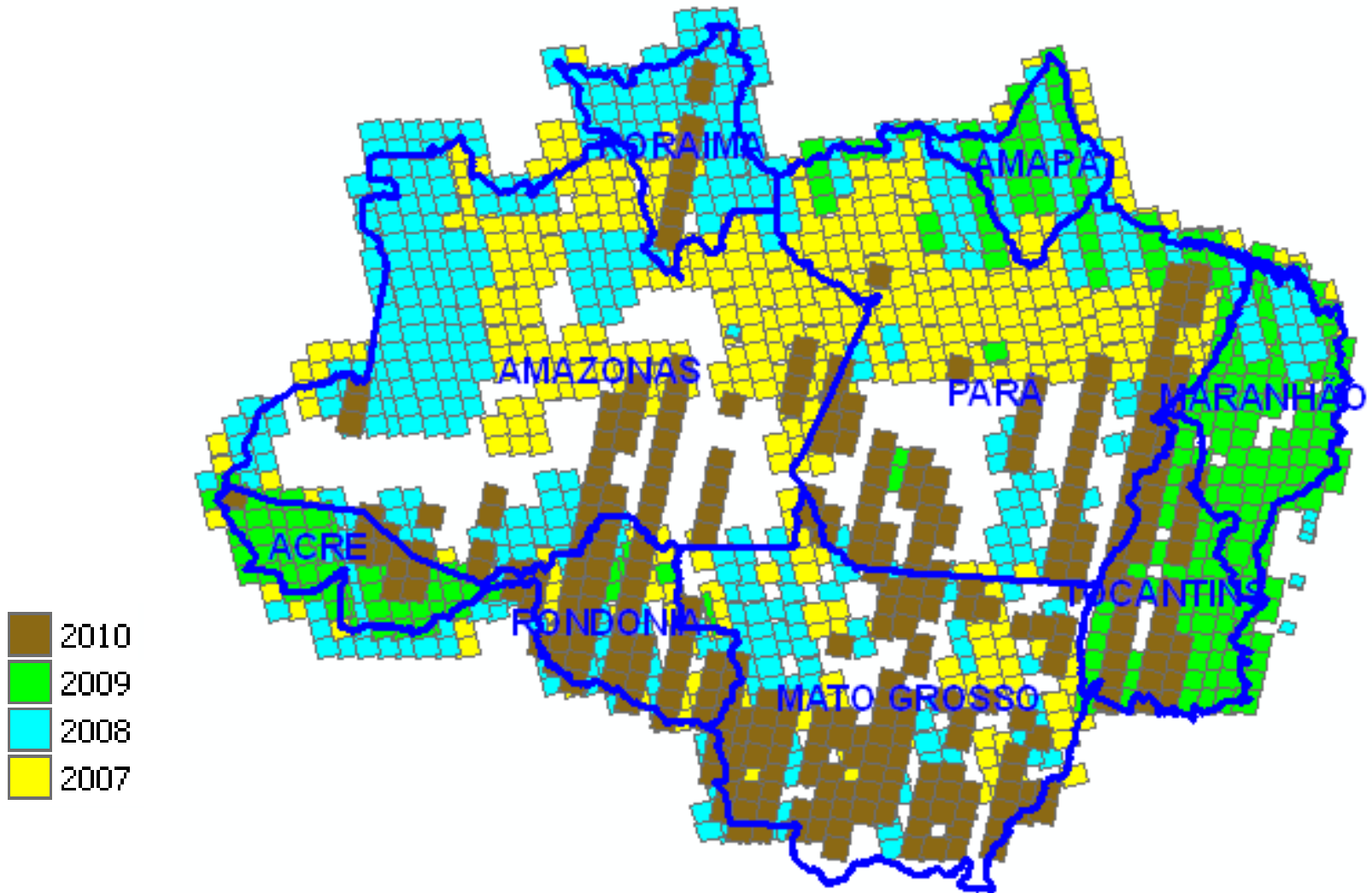
# Collection of images of the SAR missions







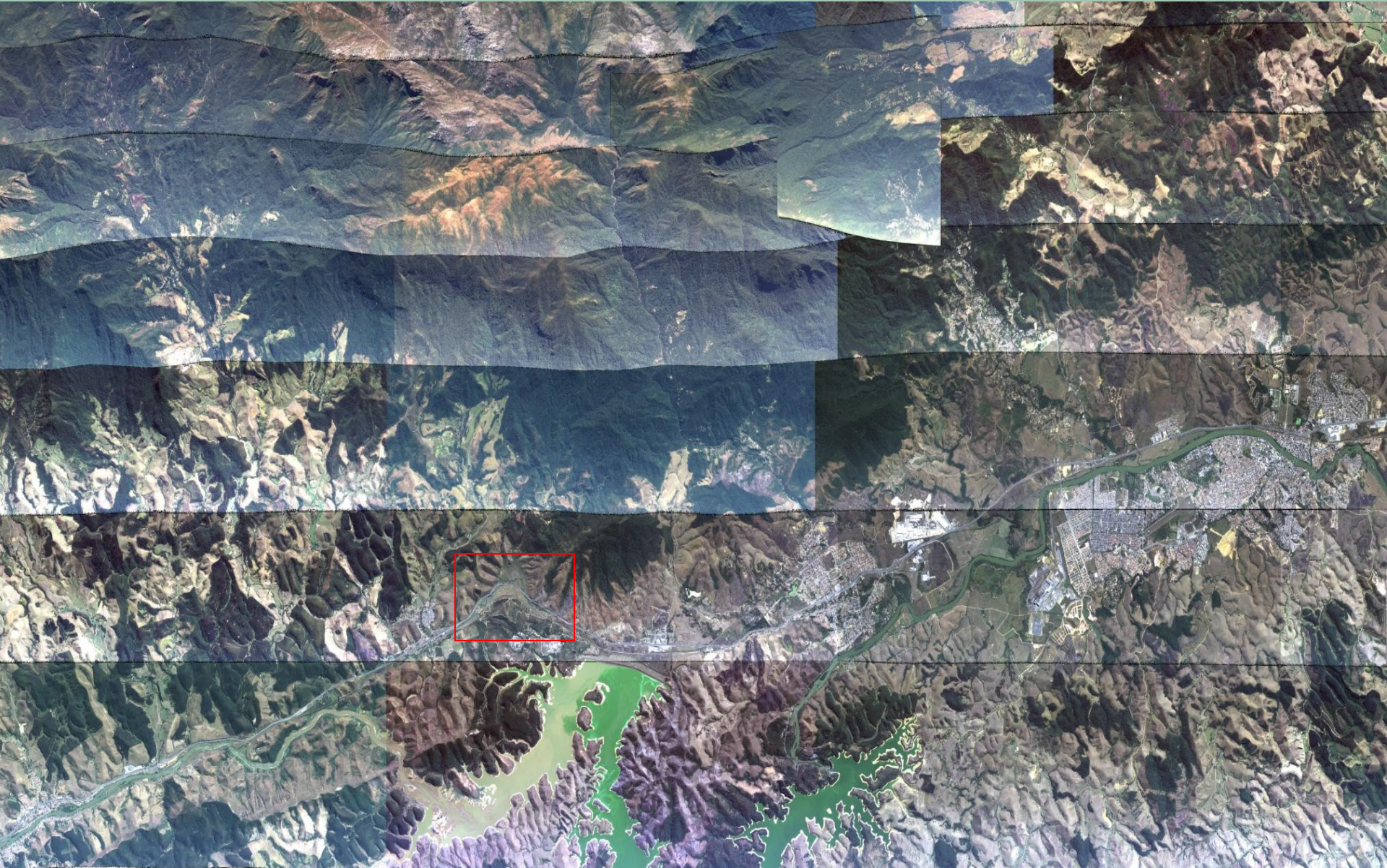
# COLLECTION OF SATELLITE IMAGES ALOS







# COLLECTION OF OPTICAL IMAGES BY PLANE















# Public Policies





# Territorial public policies in the Amazon

Regularization of public lands for regional development

Bolsa Verde: payment for environmental services to communities that keeps the preserved forest - 23,000 beneficiaries

Bolsa Família - registration of beneficiaries for the program of transfer of income

Digital inclusion program in 137 locations with the highest rates of deforestation

Green Arch Program: inclusion actions productive for reducing extreme poverty

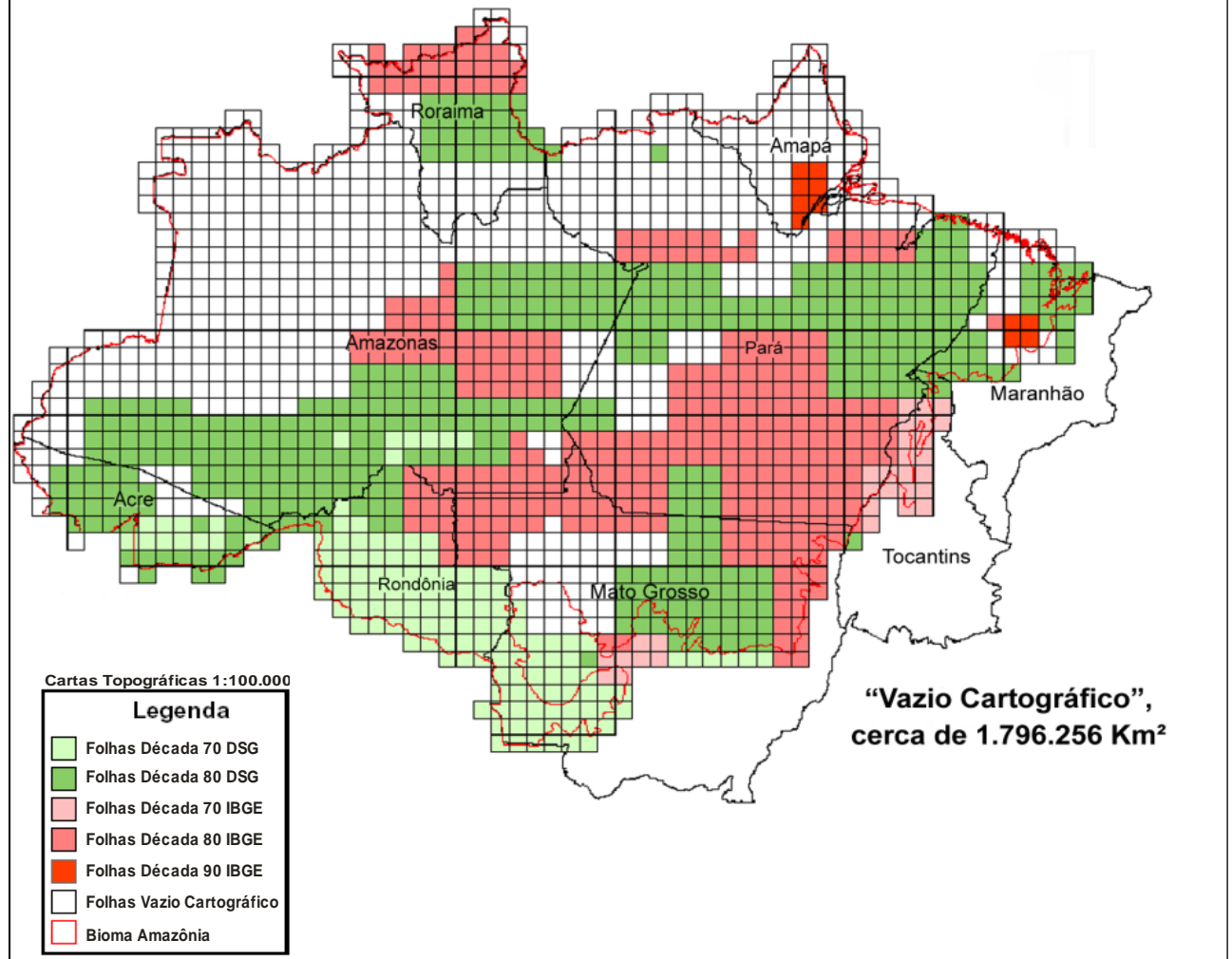




# mapping new areas in the Amazon

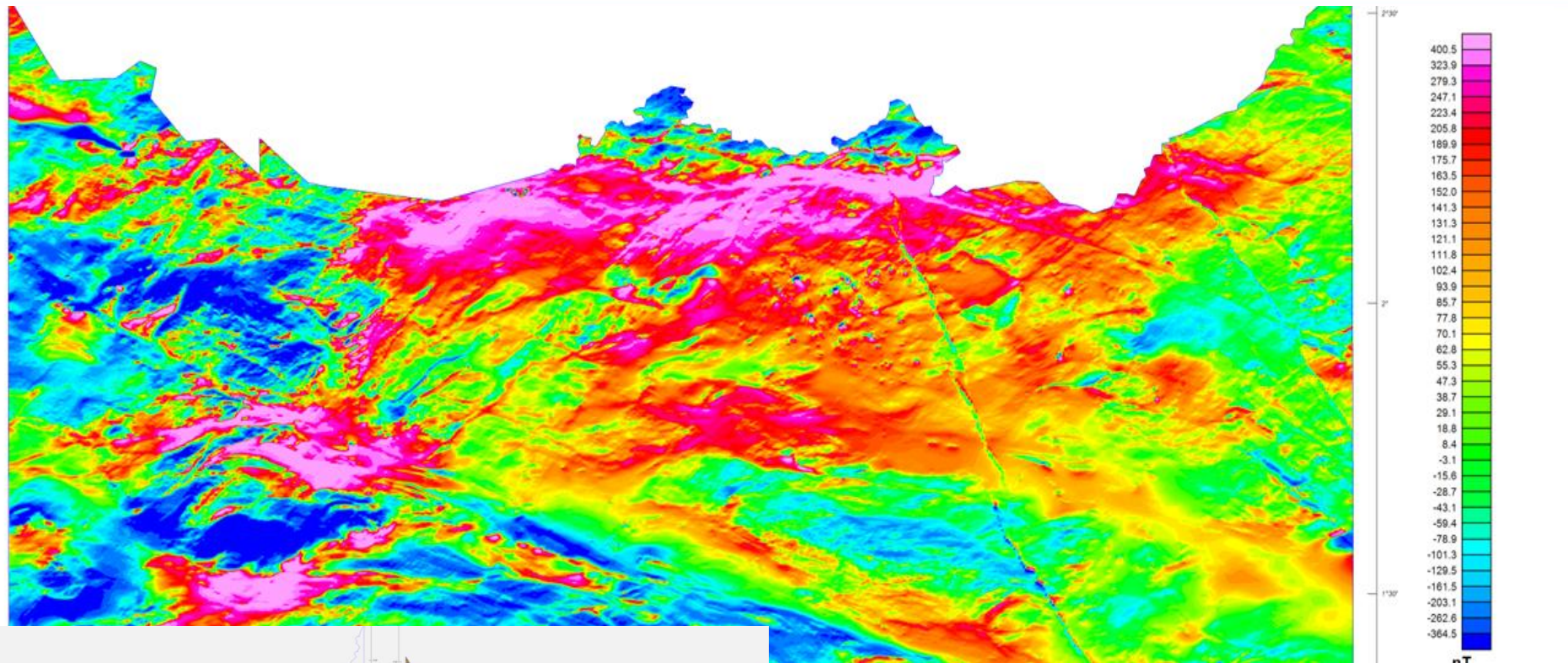
## PRODUCTS

- Topographic, nautical and geological maps.
- Coordination: Censipam
- Executors: Armed forces and Geological Survey of Brazil - CPRM
- Period: 2008 - 2015
- US\$ 200 million
- Area: 1.796.256 km<sup>2</sup> (white areas)

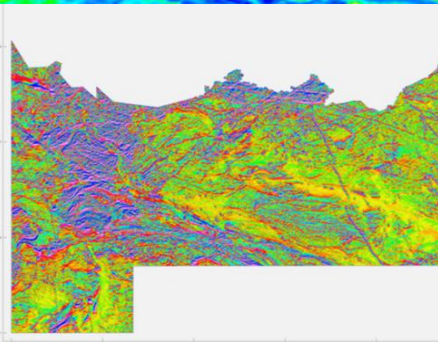




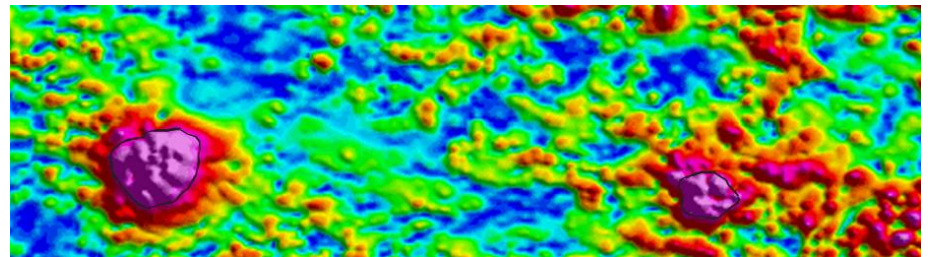
# Magnetometric data base



Lineamentos Magnéticos



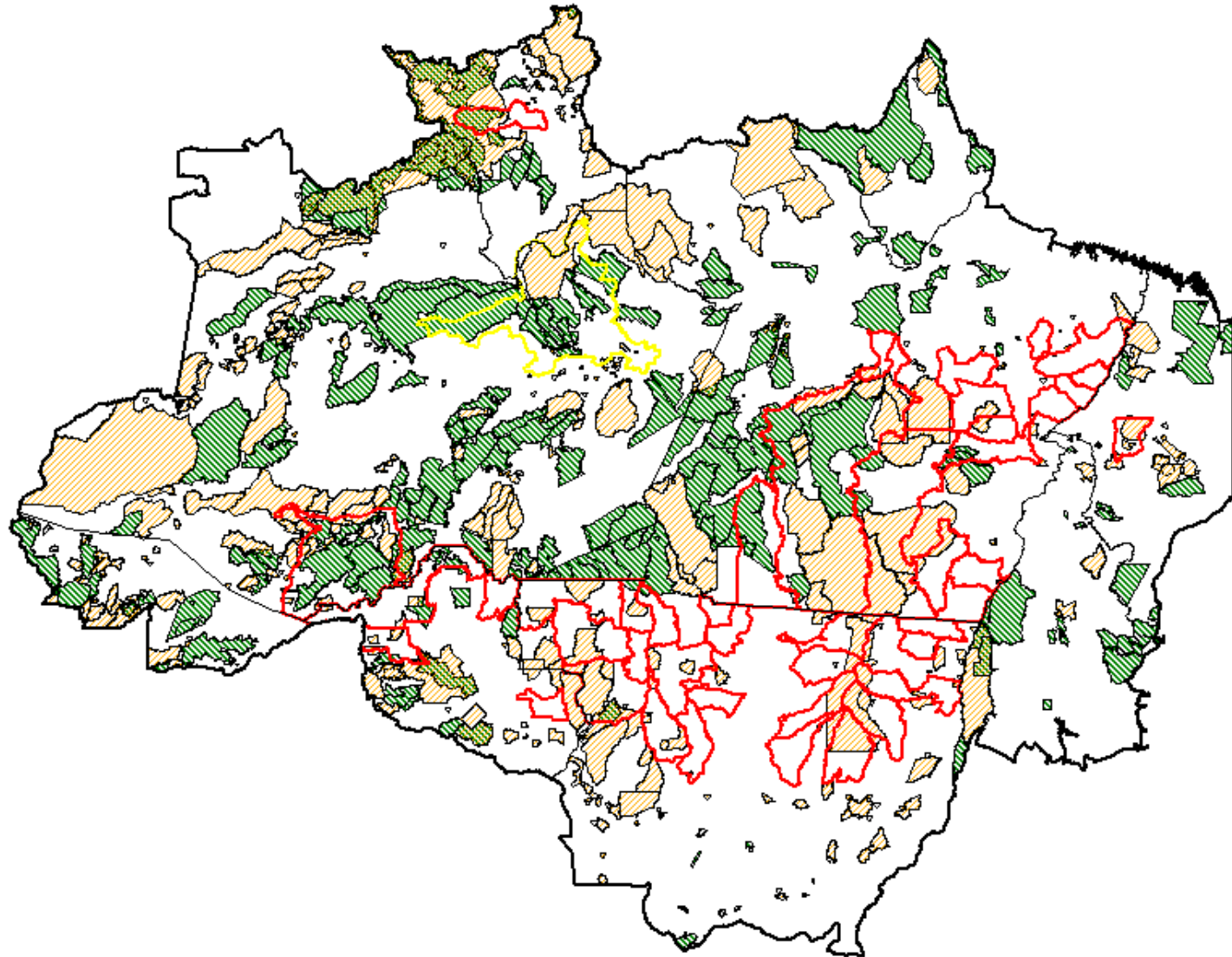
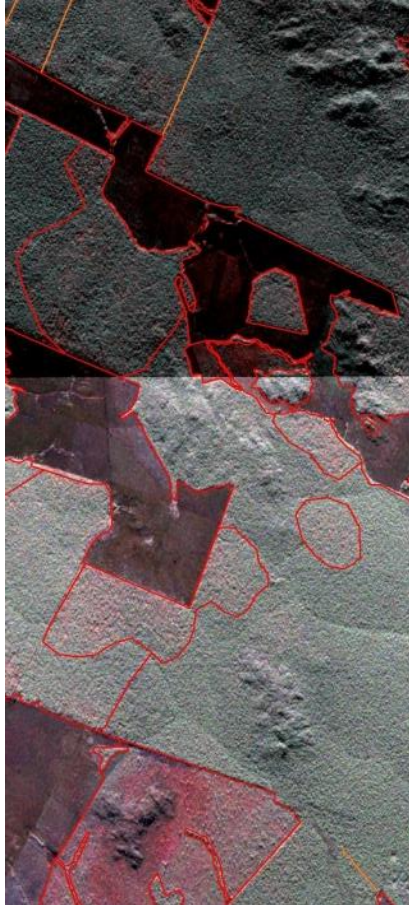
Primeira Derivada Vertical do Campo Magnético











# Monitoring Program of deforestation in Special Areas - PROAE (Forest conservation units and indigenous lands)

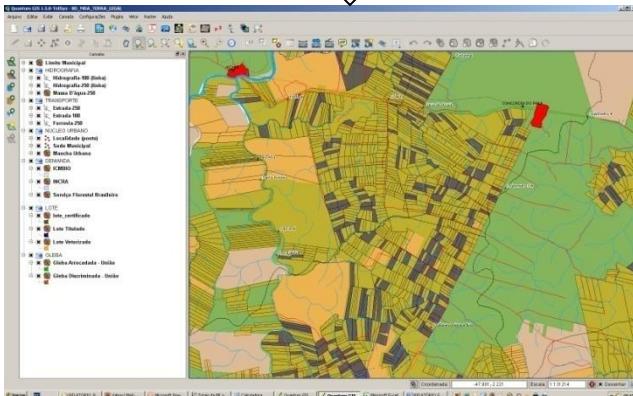
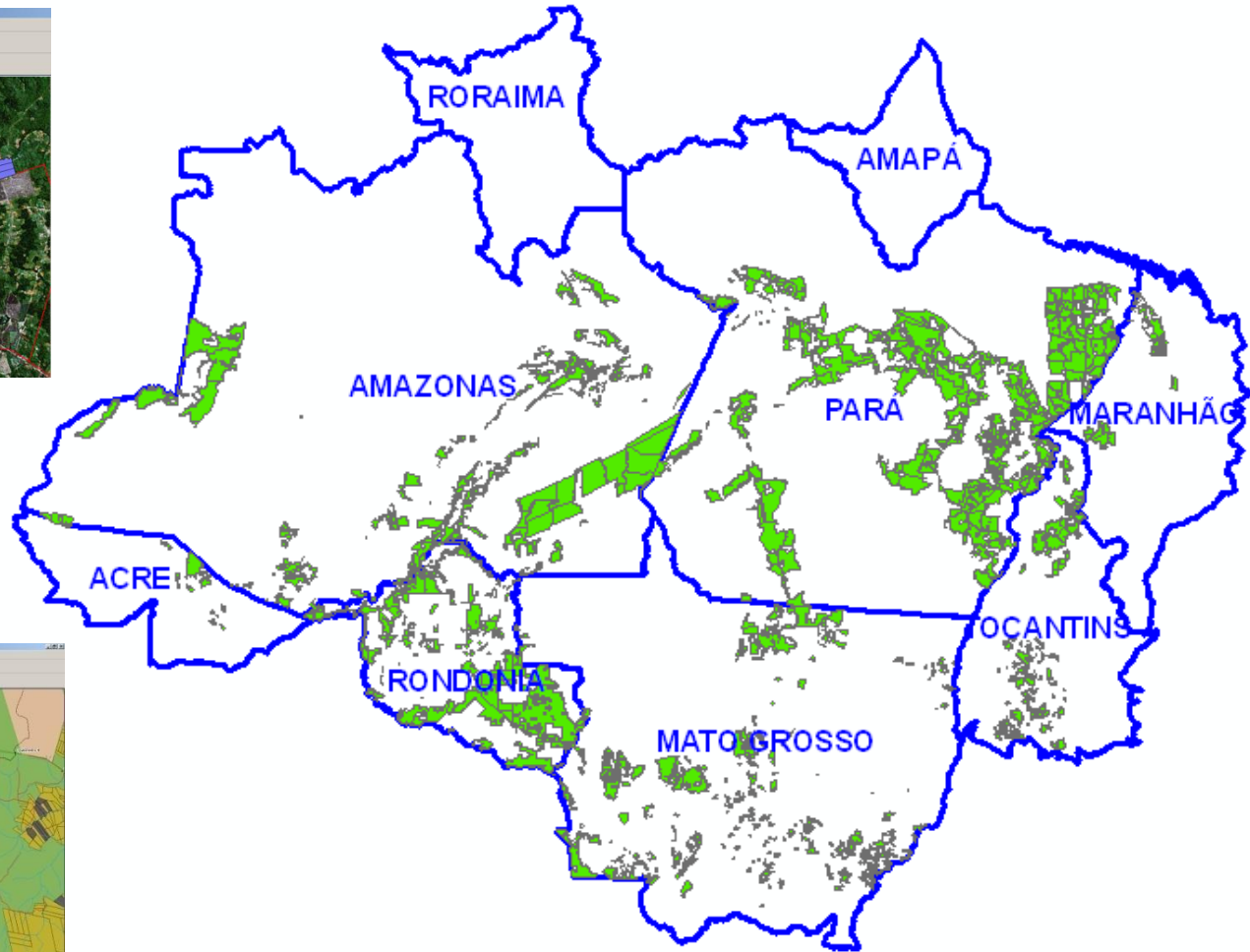
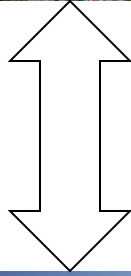
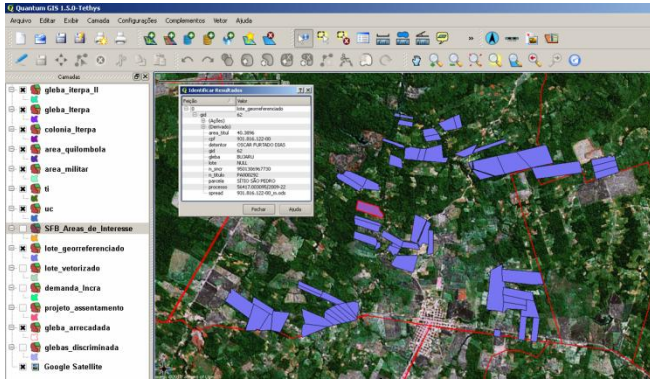


-  Terras Indígenas
-  Unidades de conservação
-  Limites municipais
-  Região Metropolitana de Manaus



# Land regularization for regional development

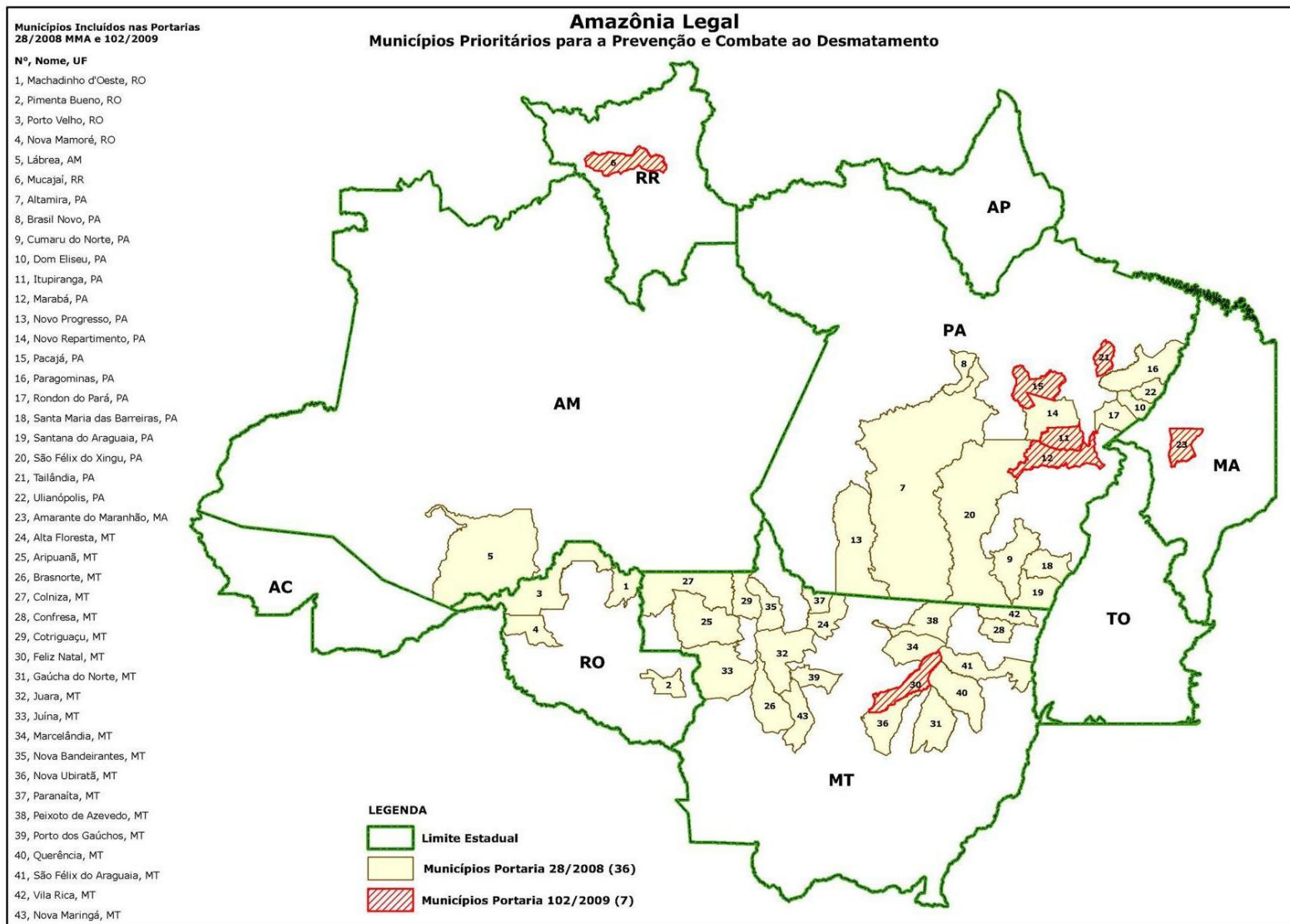
Area: 476.318 km<sup>2</sup>







# Green Arch Operation – Regional Sustainable Development against Deforestation







## CAÇANDO COORDENADAS E MEDINDO DISTÂNCIAS EM LÁBREA

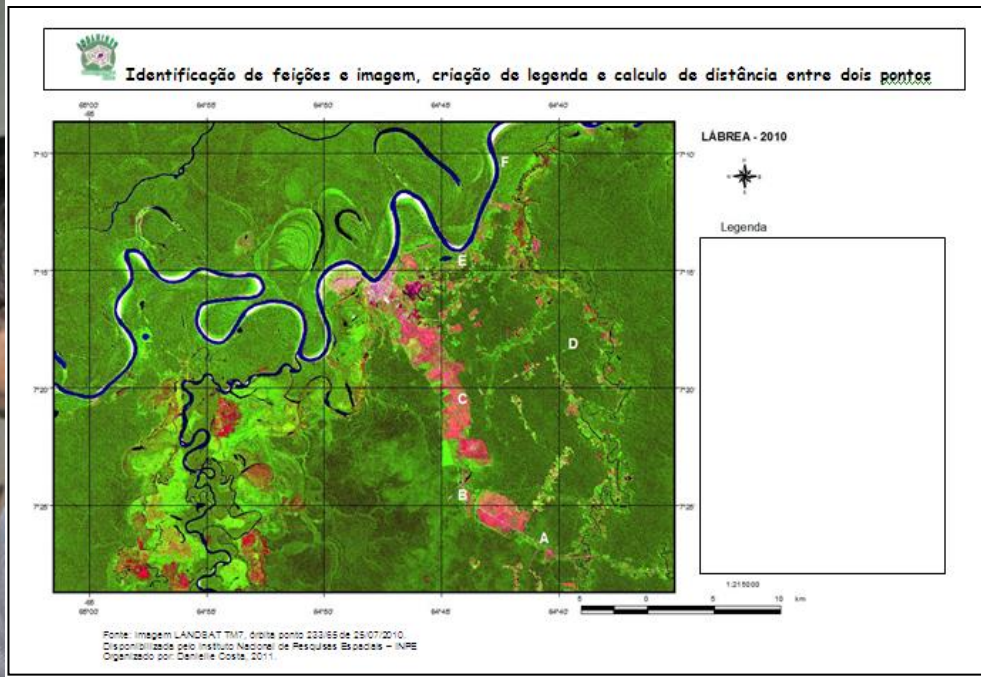
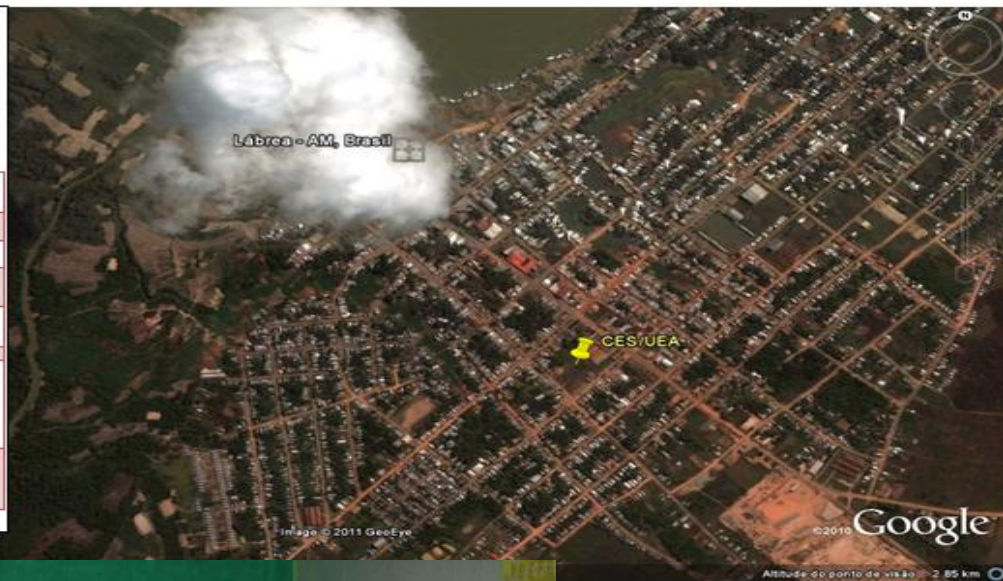
**Orientações:**  
Partindo do Centro de Estudos Superiores (CES) da UEA, você e seu grupo terão que coletar o par de coordenadas e medir a distância em metros até os locais indicados na tabela!

Ganha a disputa o grupo que chegar primeiro com as informações coletadas corretamente.

**BOA PROCURA!**

Local	Coordenadas Geográficas (LAT/LONG)	Distância em metros
CES/UEA		Ponto de Partida
Catedral de N. Sra. de Nazaré		
Esc. Estadual Sábua		
Associação de Moradores do Posto de Previdência Social		
Parque da Cidade		
Esc. Munic. Pastor José Reis (União dos Inclusive Digital de Santo Antonio)		
Inclusão Digital da Fome (Rua Monsenhor Inácio, s/n)		

645 m





# Navegando pelo Purus

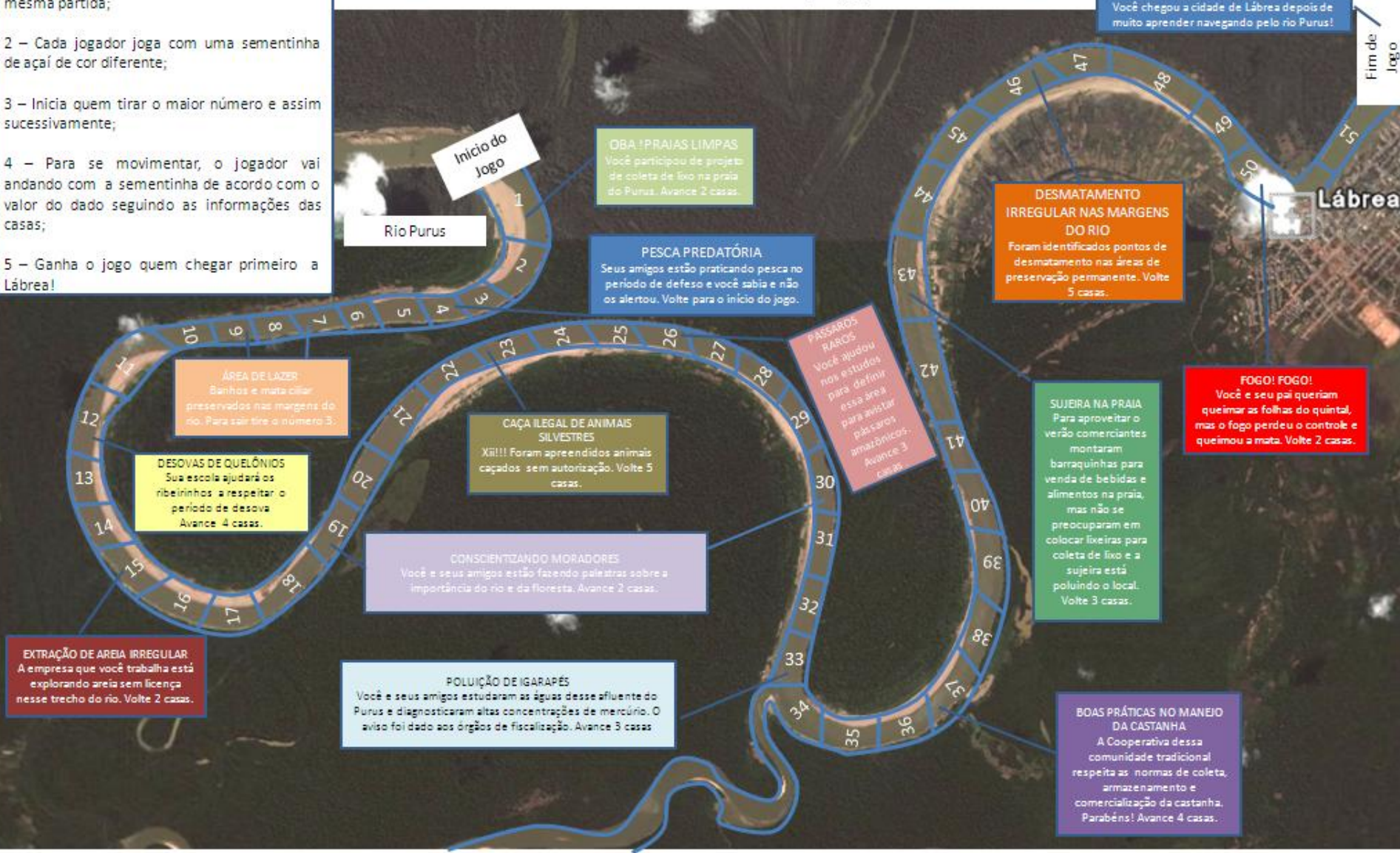
## Regras do Jogo

- 1 - Até cinco jogadores podem jogar na mesma partida;
- 2 - Cada jogador joga com uma sementinha de açaí de cor diferente;
- 3 - Inicia quem tirar o maior número e assim sucessivamente;
- 4 - Para se movimentar, o jogador vai andando com a sementinha de acordo com o valor do dado seguindo as informações das casas;
- 5 - Ganha o jogo quem chegar primeiro a Lábrea!

Utilizar dado ou roleta para jogar!

PARABÉNS VOCÊ VENCEU!!!  
Você chegou a cidade de Lábrea depois de muito aprender navegando pelo rio Purus!

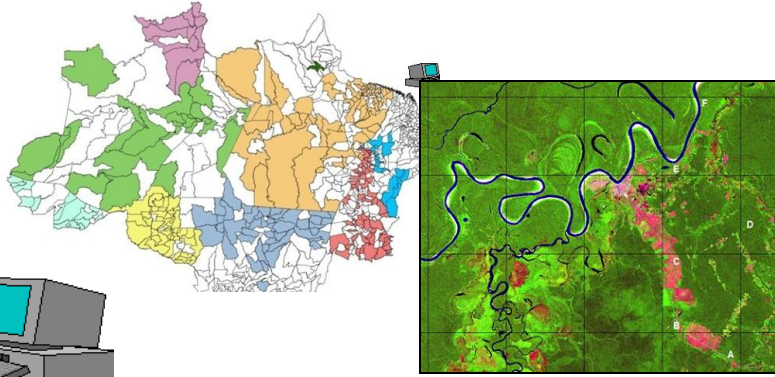
Fim de Jogo





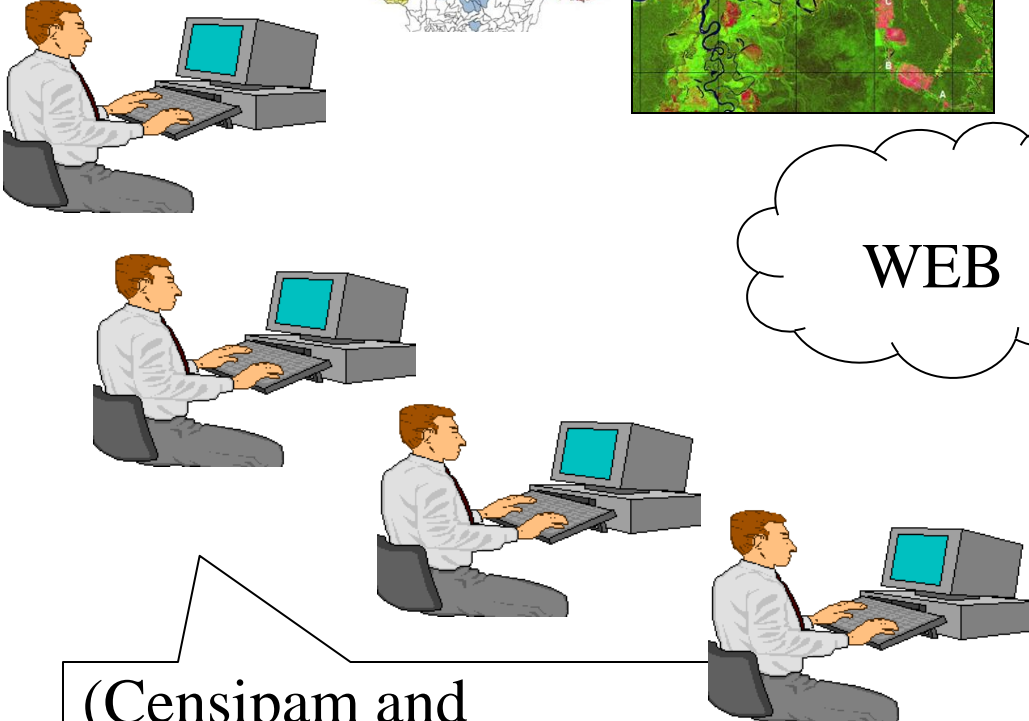
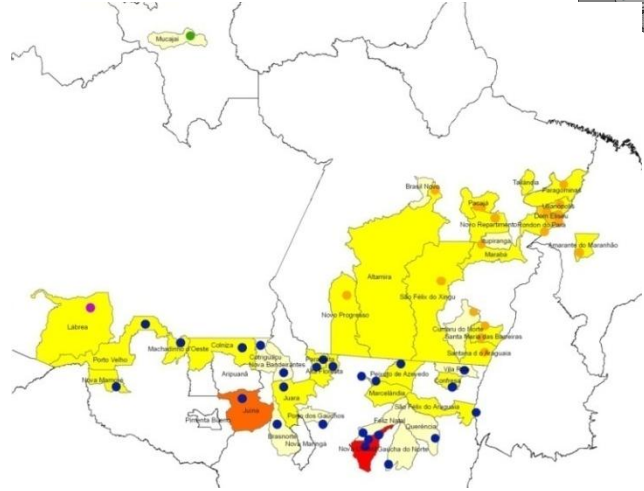
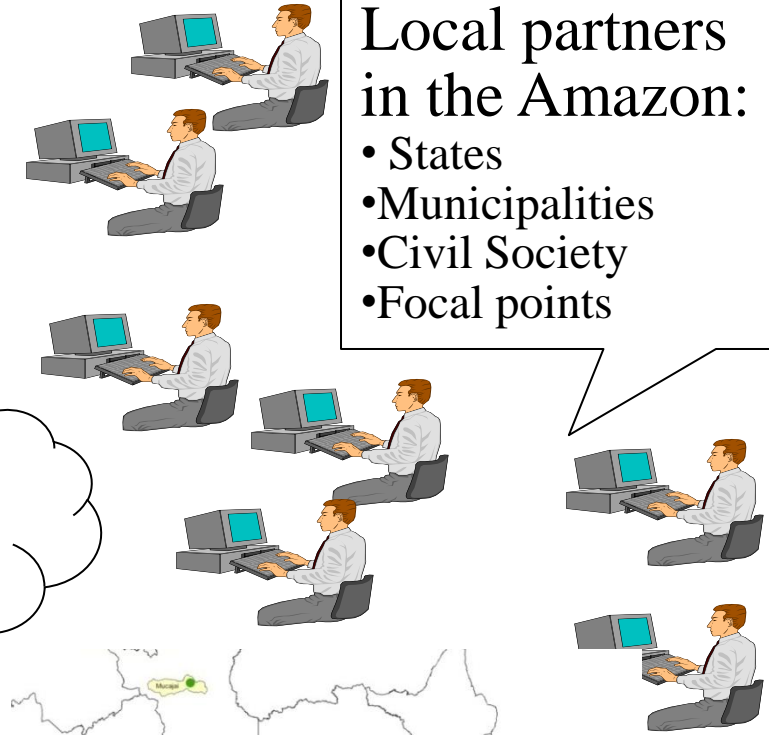
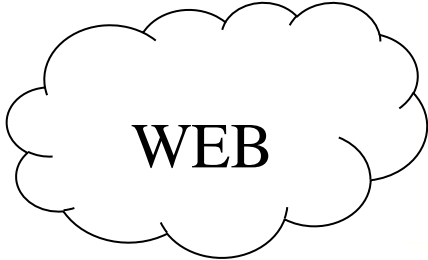


# Network including municipalities and society: Users are transformed into information producers



Local partners  
in the Amazon:

- States
- Municipalities
- Civil Society
- Focal points



(Censipam and  
government agencies):



Thank you for your attention

Fernando Campagnoli, DSc

Products Director

Gestor e Operacional do Sistema de Proteção da Amazônia –

CENSIPAM

Fone +55 61 32140204/0307

[fernando.campagnoli@sipam.gov.br](mailto:fernando.campagnoli@sipam.gov.br)